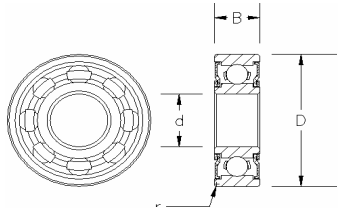
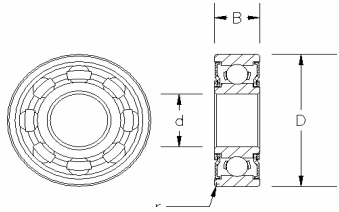


Single Row Deep Groove Ball Bearings - With Rubber Seals/Steel Shields



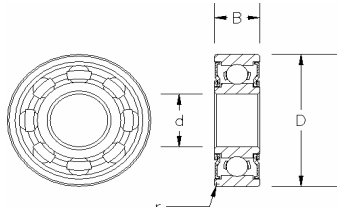
Boundary Dimensions				Basic Load Rating(kN)		Limiting Speed (rpm)				Part Number				Shoulder Dimensions				Mass kg
d	D	B	r (min.)	Cr	Cor	Grease			Oil	Z, ZZ, RU,2RU	RD, 2RD	RS, 2RS	Z	da(min)	da(max)	Da(max)	ra(max)	
						RU, 2RU	RD, 2RD	RS, 2RS										
10	19	5	0.3	1.7	0.84	37000	~	22000	43000	6800ZZ	6800 2RU	~	6800 2RS	12	12	17	0.3	0.005
	22	6	0.3	2.7	1.25	34000	~	21000	41000	6900ZZ	6900 2RU	~	6900 2RS	12	12.5	20	0.3	0.01
	26	8	0.3	4.55	1.95	31000	28000	19000	36000	6000ZZ	6000 2RU	6000 2RD	6000 2RS	12	13	24	0.3	0.019
	30	9	0.6	5.1	2.4	24000	22000	16000	29000	6200ZZ	6200 2RU	6200 2RD	6200 2RS	14	15	26	0.6	0.032
	35	11	0.6	8.1	3.45	22000	20000	16000	27000	6300ZZ	6300 2RU	6300 2RD	6300 2RS	14	16	31	0.6	0.053
12	21	5	0.3	1.9	1.05	33000	30000	20000	39000	6801ZZ	6801 2RU	6801 2RD	6801 2RS	14	14	19	0.3	0.006
	24	6	0.3	2.9	1.45	31000	28000	18000	36000	6901ZZ	6901 2RU	6901 2RD	6901 2RS	14	14	22	0.3	0.011
	28	8	0.3	5.1	2.4	27000	24000	17000	32000	6001ZZ	6001 2RU	6001 2RD	6001 2RS	14	15	26	0.3	0.022
	32	10	0.6	6.8	3.05	22000	20000	15000	27000	6201ZZ	6201 2RU	6201 2RD	6201 2RS	16	16.5	28	0.6	0.037
	37	12	1	9.7	4.2	20000	18000	15000	25000	6301ZZ	6301 2RU	6301 2RD	6301 2RS	17	17.5	32	1	0.06
15	24	5	0.3	2.1	1.25	28000	~	16000	33000	6802ZZ	6802 2RU	~	6802 2RS	17	17	22	0.3	0.007
	28	7	0.3	4.3	2.25	26000	23000	15000	30000	6902ZZ	6902 2RU	6902 2RD	6902 2RS	17	18	26	0.3	0.017
	32	9	0.3	5.6	2.85	23000	21000	14000	27000	6002ZZ	6002 2RU	6002 2RD	6002 2RS	17	18.5	30	0.3	0.03
	35	11	0.6	7.65	3.75	20000	18000	13000	24000	6202ZZ	6202 2RU	6202 2RD	6202 2RS	19	19.5	31	0.6	0.045
	42	13	1	11.4	5.45	17000	15000	12000	20000	6302ZZ	6302 2RU	6302 2RD	6302 2RS	20	21.5	37	1	0.082
17	26	5	0.3	2.6	1.55	26000	~	~	30000	6803ZZ	6803 2RU	~	~	19	19	24	0.3	0.008
	30	7	0.3	4.6	2.55	23000	21000	13000	28000	6903ZZ	6903 2RU	6903 2RD	6903 2RS	19	19.5	28	0.3	0.018
	35	10	0.3	6	3.25	21000	19000	12000	25000	6003ZZ	6003 2RU	6003 2RD	6003 2RS	19	21	33	0.3	0.039
	40	12	0.6	9.55	4.8	17000	15000	12000	21000	6203ZZ	6203 2RU	6203 2RD	6203 2RS	21	22	36	0.6	0.065
	47	14	1	13.6	6.65	15000	14000	10000	18000	6303ZZ	6303 2RU	6303 2RD	6303 2RS	22	24.3	42	1	0.115
20	32	7	0.3	4	2.45	21000	~	~	25000	6804ZZ	6804 2RU	~	~	22	22.5	30	0.3	0.018
	37	9	0.3	6.35	3.7	19000	17000	11000	23000	6904ZZ	6904 2RU	6904 2RD	6904 2RS	22	23.5	35	0.3	0.036
	42	12	0.6	9.4	5.05	17000	15000	10000	21000	6004ZZ	6004 2RU	6004 2RD	6004 2RS	24	25	38	0.6	0.069
	47	14	1	12.8	6.65	15000	14000	9700	17000	6204ZZ	6204 2RU	6204 2RD	6204 2RS	25	26.5	42	1	0.106
	52	15	1.1	15.9	7.85	14000	13000	9500	17000	6304ZZ	6304 2RU	6304 2RD	6304 2RS	26.5	27	45.5	1	0.144
22	44	12	0.6	9.4	5.15	17000	15000	9900	20000	60/22ZZ	60/22 2RU	60/22 2RD	60/22 2RS	26	26.5	40	0.6	0.073
	50	14	1	12.8	6.65	15000	14000	9700	17000	62/22ZZ	62/22 2RU	62/22 2RD	62/22 2RS	27	27	45	1	0.118
	56	16	1.1	18.5	9.4	13000	12000	8600	15000	63/22ZZ	63/22 2RU	63/22 2RD	63/22 2RS	28.5	29	49.5	1	0.201

Single Row Deep Groove Ball Bearings - With Rubber Seals/Steel Shields



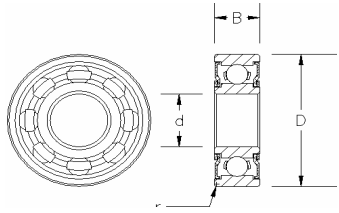
Boundary Dimensions				Basic Load Rating(kN)		Limiting Speed (rpm)				Part Number				Shoulder Dimensions				Mass kg	
d	D	B	r (min.)	Cr	Cor	Grease			Oil	Z, ZZ, RU,2RU	RD, 2RD	RS, 2RS	Z	da(min)	da(max)	Da(max)	ra(max)		
						RU, 2RU	RD, 2RD	RS, 2DS		RU, 2RU	RD, 2RD	RS, 2RS	Z	da(min)	da(max)	Da(max)	ra(max)		
25	37	7	0.3	4.3	2.95	18000			10000	21000	6805ZZ	6805 2RU	~	6805 2RS	27	27.5	35	0.3	0.022
	42	9	0.3	7	4.55	16000	14000	9300	19000		6905ZZ	6905 2RU	6905 2RD	6905 2RS	27	29	40	0.3	0.041
	47	12	0.6	10.1	5.85	15000	14000	9000	18000		6005ZZ	6005 2RU	6005 2RD	6005 2RS	29	29.5	43	0.6	0.08
	52	15	1	14	7.85	13000	12000	8400	15000		6205ZZ	6205 2RU	6205 2RD	6205 2RS	30	31.5	47	1	0.128
	62	17	1.1	20.6	11.3	11000	9900	7500	13000		6305ZZ	6305 2RU	6305 2RD	6305 2RS	31.5	34	55.5	1	0.232
28	52	12	0.6	12.4	7.4	14000	13000	8100	16000		60/28 ZZ	60/28 2RU	60/28 2RD	60/28 2RS1	32	33	48	0.6	0.097
	58	16	1	17.9	9.75	12000	11000	7600	14000		62/28 ZZ	62/28 2RU	62/28 2RD	62/28 2RS	33	35	53	1	0.173
	68	18	1.1	23.5	13.1	10000	9000	6900	12000		63/28 ZZ	63/28 2RU	63/28 2RD	63/28 2RS	34.5	37.5	61.5	1	0.328
30	42	7	0.3	4.55	3.4	15000	~	~	18000		6806ZZ	6806 2RU	~	~	32	32.5	40	0.3	0.026
	47	9	0.3	7.25	5	14000	13000	8200	17000		6906ZZ	6906 2RU	6906 2RD	6906 2RS	32	33	45	0.3	0.045
	55	13	1	13.2	8.25	13000	12000	7500	15000		6006ZZ	6006 2RU	6006 2RD	6006 2RS	35	36	50	1	0.116
	62	16	1	19.5	11.3	11000	9900	7000	13000		6206ZZ	6206 2RU	6206 2RD	6206 2RS	35	37.5	57	1	0.199
	72	19	1.1	26.7	15	9600	8600	6400	12000		6306ZZ	6306 2RU	6306 2RD	6306 2RS	36.5	40	65.5	1	0.346
32	58	13	1	15	9.15	12000	11000	7200	14000		60/32 ZZ	60/32 2RU	60/32 2RD	60/32 2RS	37	38	53	1	0.127
	65	17	1	23.5	13.1	10000	9000	6900	12000		62/32 ZZ	62/32 2RU	62/32 2RD	62/32 2RS	37	38.5	60	1	0.228
	75	20	1.1	30.1	16.2	9300	8400	6400	11000		63/32 ZZ	63/32 2RU	63/32 2RD	63/32 2RS	38.5	41	68.5	1	0.437
35	47	7	0.3	4.75	3.85	13000	~	~	16000		6807 ZZ	6807 2RU	~	~	37	37.5	45	0.3	0.03
	55	10	0.6	10.9	7.75	12000	11000	68000	14000		6907 ZZ	6907 2RU	6907 2RD	6907 2RS	39	40	51	0.6	0.073
	62	14	1	15.9	10.3	11000	9900	6500	13000		6007 ZZ	6007 2RU	6007 2RD	6007 2RS	40	42	58	1	0.155
	72	17	1.1	25.7	15.4	9200	8300	6000	11000		6207 ZZ	6207 2RU	6207 2RD	6207 2RS	41.5	43.5	65.5	1	0.288
	80	21	1.5	33.4	19.3	8500	7700	5700	10000		6307 ZZ	6307 2RU	6307 2RD	6307 2RS	43	46	72	1.5	0.457
40	52	7	0.3	4.95	4.2	12000	11000	6700	14000		6808 ZZ	6808 2RU	6808 2RD	6808 2RS	42	42	50	0.3	0.033
	62	12	0.6	13.7	9.95	11000	9900	6100	13000		6908 ZZ	6908 2RU	6908 2RD	6908 2RS	44	44.5	58	0.6	0.112
	68	15	1	16.7	11.5	10000	9000	5800	12000		6008 ZZ	6008 2RU	6008 2RD	6008 2RS	45	46.5	63	1	0.192
	80	18	1.1	29.1	17.8	8300	7500	5400	10000		6208 ZZ	6208 2RU	6208 2RD	6208 2RS	46.5	49	73.5	1	0.366
	90	23	1.5	40.7	24	7700	6900	5100	9200		6308 ZZ	6308 2RU	6308 2RD	6308 2RS	48	51.5	82	1.5	0.633
45	58	7	0.3	6.2	5.4	11000	9900	~	13000		6809 ZZ	6809 2RU	6809 2RD	~	47	47	56	0.3	0.04
	68	12	0.6	14.1	10.9	9700	8700	5500	11000		6909 ZZ	6909 2RU	6909 2RD	6909 2RS	49	50	64	0.6	0.132
	75	16	1	21	15.1	9200	8300	5300	11000		6009 ZZ	6009 2RU	6009 2RD	6009 2RS	50	51.5	70	1	0.245

Single Row Deep Groove Ball Bearings - With Rubber Seals/Steel Shields



Boundary Dimensions				Basic Load Rating(kN)		Limiting Speed (rpm)				Part Number				Shoulder Dimensions				Mass kg
d	D	B	r (min.)	Cr	Cor	Grease			Oil	Z, ZZ, RU,2RU	RD, 2RD	RS, 2RS	Z	da(min)	da(max)	Da(max)	ra(max)	
						RU, 2RU	RD, 2RD	RS, 2RS		Z	da(min)	da(max)	Da(max)	ra(max)				
85	19	1.1	32.7	20.3	7700	6900	5100	9200	6209 ZZ	6209 2RU	6209 2RD	6209 2RS	51.5	53.5	78.5	1	0.407	
100	25	1.5	48.9	29.5	6800	6100	4500	8100	6309 ZZ	6309 2RU	6309 2RD	6309 2RS	53	59.5	92	1.5	0.833	
65	7	1.3	6.6	6.1	9600	8600	~	11000	6810 ZZ	6810 2RU	6810 2RD	~	52	53	63	0.3	0.052	
72	12	0.6	14.5	11.7	9000	~	~	11000	6910 ZZ	6910 2RU	~	~	54	55.5	68	0.6	0.133	
80	16	1	21	16.6	8400	7600	4800	9900	6010 ZZ	6010 2RU	6010 2RD	6010 2RS	55	57	75	1	0.261	
90	20	1.1	35.1	23.3	7100	6400	4600	8500	6210 ZZ	6210 2RU	6210 2RD	6210 2RS	56.5	59	83.5	1	0.463	
110	27	2	62	38.3	6100	5500	4100	7300	6310 ZZ	6310 2RU	6310 2RD	6310 2RS	59	66.5	101	2	1.07	
72	9	0.3	8.8	8.1	8700	7800	~	10000	6811 ZZ	6811 2RU	6811 2RD	~	57	58.5	70	0.3	0.083	
80	13	1	16.6	14.1	8100	7300	4500	9600	6911 ZZ	6911 2RU	6911 2RD	6911 2RS	60	60.5	75	1	0.185	
90	18	1.1	28.3	21.2	7600	6800	4300	8900	6011 ZZ	6011 2RU	6011 2RD	6011 2RS	61.5	62	83.5	1	0.385	
100	21	1.5	43.4	29.4	6300	5700	4100	7600	6211 ZZ	6211 2RU	6211 2RD	6211 2RS	63	66	92	1.5	0.607	
120	29	2	71.6	45	5600	~	3700	6700	6311 ZZ	6311 2RU	~	6311 2RS	64	74.5	111	2	1.37	
78	10	0.3	11.5	10.6	8000	7200	~	9400	6812 ZZ	6812 2RU	6812 2RD	~	62	63	76	0.3	0.104	
85	13	1	20.2	17.3	7500	~	~	8900	6912 ZZ	6912 2RU	~	~	65	66	80	1	0.192	
95	18	1.1	29.4	23.2	7100	~	4000	8400	6012 ZZ	6012 2RU	~	6812 2RS	66.5	68.5	88.5	1	0.415	
110	22	1.5	52.4	36.2	5700	5100	3700	6900	6212 ZZ	6212 2RU	6812 2RD	6812 2RS	68	72.5	102	1.5	0.783	
130	31	2.1	81.9	52.2	5200	~	3500	6200	6312 ZZ	6312 2RU	~	6812 2RS	71	80	119	2	1.7	
85	10	0.6	11.9	11.5	7300	6600	~	8600	6813 ZZ	6813 2RU	6813 2RD	~	69	69	81	0.6	0.126	
90	13	1	17.4	16.1	7100	6400	3900	8400	6913 ZZ	6913 2RU	6913 2RD	6913 2RS	70	71	85	1	0.211	
100	18	1.1	30.5	25.2	6600	~	3700	7800	6013 ZZ	6013 2RU	~	6013 2RS	71.5	74.5	93.5	1	0.435	
120	23	1.5	57.2	40.1	5400	~	3500	6400	6213 ZZ	6213 2RU	~	6213 2RS	73	79	112	1.5	0.99	
140	33	2.1	92.7	59.9	4800	~	3200	5800	6313 ZZ	6313 2RU	~	6313 2RS	76	86	129	2	2.08	
90	10	0.6	12.1	11.9	6800	6100	~	8100	6814 ZZ	6814 2RU	6814 2RD	~	74	74	86	0.6	0.134	
100	16	1	23.7	21.2	6400	5800	3600	7600	6914 ZZ	6914 2RU	6914 2RD	6914 2RS	75	75	95	1	0.342	
110	20	1.1	38.1	30.9	6100	~	3500	7200	6014 ZZ	6014 2RU	~	6014 2RS	76.5	79.5	103.5	1	0.602	
125	24	1.5	62.2	44.1	5100	~	3300	6100	6214 ZZ	6214 2RU	~	6214 2RS	78	84	117	1.5	1.07	
150	35	2.1	104	68.2	4500	~	3000	5400	6314 ZZ	6314 2RU	~	6314 2RS	81	92	139	2	2.52	
95	10	0.6	12.5	12.9	6400	5800	~	7600	6815 ZZ	6815 2RU	6815 2RD	~	79	79	91	0.6	0.142	
105	16	1	24.4	22.6	6100	~	~	7200	6915 ZZ	6915 2RU	~	~	80	82.5	100	1	0.363	

Single Row Deep Groove Ball Bearings - With Rubber Seals/Steel Shields



Boundary Dimensions				Basic Load Rating(kN)		Limiting Speed (rpm)				Part Number				Shoulder Dimensions				Mass kg	
d	D	B	r (min.)	Cr	Cor	Grease			Oil	Z, ZZ, RU,2RU		RD, 2RD	RS, 2RS	Z	da(min)	da(max)	Da(max)		ra(max)
						RU, 2RU	RD, 2RD	RS, 2DS											
75	115	20	1.1	39.6	33.5	5700	~	3300	6800	6015 ZZ	6015 2RU	~	6015 2RS	81.5	84.5	108.5	1	0.638	
	130	25	1.5	67.4	48.3	4800	~	3100	5800	6215 ZZ	6215 2RU	~	6215 2RS	83	88.5	122	1.5	1.18	
	160	37	2.1	113	77.2	4200	~	2800	5000	6315 ZZ	6315 2RU	~	6315 2RS	86	97.5	149	2	3.02	