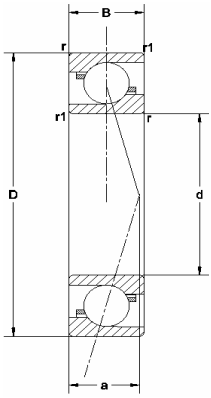
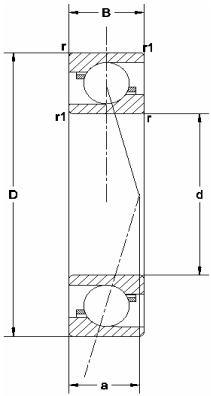


Single Row Angular Contact Ball Bearings



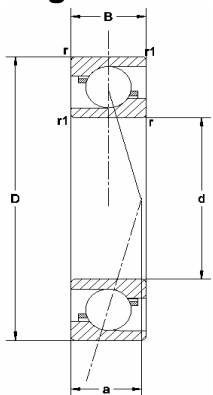
Boundary Dimensions					Basic Load Rating (kN)				Limiting Speed (rpm)		Part Number	Working point position a	Shoulder Dimensions			Mass (kg) Approx
d	D	B	r	r1	with machined		with pressed		Grease	Oil			da	Da	ra	
10	22	6	0.3	0.15	3	1.5			52000	69000	7900C	5.1	12.5	19.5	0.3	0.008
	26	8	0.3	0.15	5	2.35			34000	42000	7000	9.1	12.5	23.5	0.3	0.021
	26	8	0.3	0.15	4.65	2.15			25000	33000	7000B	11.6	12.5	23.5	0.3	0.021
	26	8	0.3	0.15	5.3	2.45			47000	62000	7000C	6.4	12.5	23.5	0.3	0.021
	30	9	0.6	0.3	4.65	2.2	5.4	2.75	29000	37000	7200	10.4	14.5	25.5	0.6	0.031
	30	9	0.6	0.3	4.3	2	4.95	2.5	22000	29000	7200B	13.1	14.5	25.5	0.6	0.031
	30	9	0.6	0.3	5	2.35	5.8	2.95	40000	54000	7200C	7.2	14.5	25.5	0.6	0.031
	35	11	0.6	0.3	8.5	3.75	9.3	4.3	27000	33000	7300	12	14.5	30.5	0.6	0.054
12	24	6	0.3	0.15	3.2	1.7			48000	62000	7901C	5.4	14.5	21.5	0.3	0.01
	28	8	0.3	0.15	5.4	2.75			29000	37000	7001	9.9	14.5	25.5	0.3	0.024
	28	8	0.3	0.15	4.95	2.5			22000	29000	7001B	12.6	14.5	25.5	0.3	0.024
	28	8	0.3	0.15	5.8	2.95			40000	54000	7001C	6.7	14.5	25.5	0.3	0.024
	32	10	0.6	0.3	7.45	3.65	8	4.05	27000	34000	7201	11.4	16.5	27.5	0.6	0.038
	32	10	0.6	0.3	6.95	3.4	7.4	3.75	20000	27000	7201B	14.2	16.5	27.5	0.6	0.038
	32	10	0.6	0.3	7.9	3.85	8.5	4.3	38000	50000	7201C	7.9	16.5	27.5	0.6	0.038
	37	12	1	0.6	10.2	4.6	11.2	5.25	24000	31000	7301	13.1	17.5	31.5	1	0.065
15	28	7	0.3	0.15	4.75	2.65			39000	52000	7902C	6.4	17.5	25.5	0.3	0.015
	32	9	0.3	0.15	6.1	3.45			26000	32000	7002	11.3	17.5	29.5	0.3	0.035
	32	9	0.3	0.15	5.55	3.15			19000	25000	7002B	14.6	17.5	29.5	0.3	0.035
	32	9	0.3	0.15	6.6	3.7			35000	47000	7002C	7.6	17.5	29.5	0.3	0.035
	35	11	0.6	0.3	8.1	4.25	8.1	4.25	24000	29000	7202	12.9	19.5	30.5	0.6	0.048
	35	11	0.6	0.3	7.45	3.95	7.45	3.95	18000	24000	7202B	16.2	19.5	30.5	0.6	0.048
	35	11	0.6	0.3	8.65	4.55	8.65	4.55	33000	43000	7202C	8.9	19.5	30.5	0.6	0.048
	42	13	1	0.6	12.5	6.45	13.4	7.2	20000	25000	7302	15	20.5	36.5	1	0.048
17	30	7	0.3	0.15	4.35	2.3			36000	47000	7903C	6.7	19.5	27.5	0.3	0.016
	35	10	0.3	0.15	6.75	4.15			23000	28000	7003	12.7	19.5	32.5	0.3	0.045
	35	10	0.3	0.15	6.1	3.75			17000	23000	7003B	16.1	19.5	32.5	0.3	0.045
	35	10	0.3	0.15	7.3	4.45			31000	41000	7003C	8.6	19.5	32.5	0.3	0.045
	40	12	0.6	0.3	10.2	5.5	10.2	5.5	21000	26000	7203	14.4	21.5	35.5	0.6	0.07
	40	12	0.6	0.3	9.35	5.05	9.35	5.05	16000	21000	7203B	18.2	21.5	35.5	0.6	0.07
	40	12	0.6	0.3	10.9	5.9	10.9	5.9	29000	38000	7203C	9.9	21.5	35.5	0.6	0.07
	47	14	1	0.6	14.9	7.9	16	8.75	18000	23000	7303	16.5	22.5	41.5	1	0.12
	47	14	1	0.6	13.8	7.3	14.8	8.1	14000	18000	7303B	20.8	22.5	41.5	1	0.12
	47	14	1	0.6	15.8	8.4	15.8	8.4	25000	33000	7303C	11.4	22.5	41.5	1	0.12

Single Row Angular Contact Ball Bearings



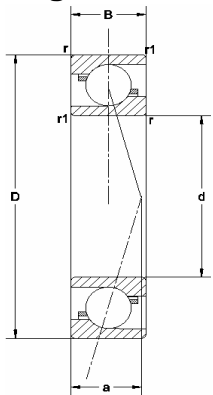
Boundary Dimensions					Basic Load Rating (kN)				Limiting Speed (rpm)		Part Number	Working point position a	Shoulder Dimensions			Mass (kg) Approx
d	D	B	r	r1	with machined		with pressed		Grease	Oil			da	Da	ra	
20	37	9	0.3	0.15	7.3	4.55			30000	39000	7904C	8.3	22.5	34.5	0.3	0.035
	42	12	0.6	0.3	10.3	6.1			19000	24000	7004	15.1	24.5	47.5	0.6	0.079
	42	12	0.6	0.3	9.35	5.55			14000	19000	7004B	19.2	24.5	37.5	0.6	0.079
	42	12	0.6	0.3	11.1	6.6			26000	35000	7004C	10.2	24.5	37.5	0.6	0.079
	47	14	1	0.6	14.5	8.4	15.4	9.15	17000	22000	7204	17	25.5	41.5	1	0.112
	47	14	1	0.6	13.3	7.7	14.1	8.4	13000	17000	7204B	21.5	25.5	41.5	1	0.112
	47	14	1	0.6	15.5	9	16.5	9.8	24000	32000	7204C	11.6	25.5	41.5	1	0.112
	52	15	1.1	0.6	17.4	9.4	18.7	10.4	17000	21000	7304	17.9	27	45	1	0.015
	52	15	1.1	0.6	16.2	8.7	17.3	9.65	13000	17000	7304B	22.6	27	45	1	0.015
	52	15	1.1	0.6	18.5	9.95	19.9	11.1	23000	31000	7304C	12.3	27	45	1	0.015
	72	19	1.1	0.6	35.6	19.1			9600	13000	7404	23.1	27	65	1	0.395
	72	19	1.1	0.6	33.5	17.9			8500	12000	7404C	29.2	27	65	1	0.395
25	42	9	0.3	0.15	7.8	5.45			25000	33000	7905C	9.1	27.5	39.5	0.3	0.041
	47	12	0.6	0.3	11.3	7.4			17000	21000	7005	16.4	29.5	42.5	0.6	0.091
	47	12	0.6	0.3	10.2	6.7			12000	17000	7005B	21.1	29.5	42.5	0.6	0.091
	47	12	0.6	0.3	12.3	9			23000	30000	7005C	10.8	29.5	42.5	0.6	0.091
	52	15	1	0.6	15.3	9.5	16.2	10.3	15000	19000	7205	18.8	30.5	46.5	1	0.135
	52	15	1	0.6	14	8.7	14.7	9.4	12000	15000	7205B	23.9	30.5	46.5	1	0.135
	52	15	1	0.6	16.6	10.2	17.5	11.1	21000	28000	7205C	12.7	30.5	46.5	1	0.135
	62	17	1.1	0.6	24.8	14.4	26.4	15.8	14000	17000	7305	21.1	32	55	1	0.243
	62	17	1.1	0.6	22.9	13.3	24.4	14.6	10000	14000	7305B	26.8	32	55	1	0.243
	62	17	1.1	0.6	26.4	15.3	28.1	16.8	19000	25000	7305C	14.3	32	55	1	0.243
	80	21	1.5	1	39.7	23.2	42.6	25.7	8200	11000	7405	28.4	33.5	71.5	1.5	0.527
	80	21	1.5	1	36.9	21.5	39.6	23.9	7300	10000	7405B	33.6	33.5	71.5	1.5	0.527
30	47	9	0.3	0.15	8.3	6.25			22000	29000	7906C	9.7	32.5	44.5	0.3	0.046
	55	13	1	0.6	12.6	9.55			20000	26000	ACH006C	12.2	36	49	1	0.122
	55	13	1	0.6	14.5	10.1			14000	18000	7006	18.8	35.5	49.5	1	0.133
	55	13	1	0.6	13.1	9.2			11000	14000	7006B	24.3	35.5	49.5	1	0.133
	55	13	1	0.6	15.8	11			20000	26000	7006C	12.2	35.5	49.5	1	0.133
	62	16	1	0.6	21.3	13.7	22.5	14.8	13000	16000	7206	21.5	35.5	56.5	1	0.208
	62	16	1	0.6	19.4	12.5	20.5	13.6	9600	13000	7206B	27.6	35.5	56.5	1	0.208
	62	16	1	0.6	23	14.7	24.3	16	18000	24000	7206C	14.3	35.5	56.5	1	0.208
	72	19	1.1	0.6	30.1	18.9	31.9	20.6	12000	14000	7306	24.5	37	65	1	0.362
	72	19	1.1	0.6	27.6	17.4	29.3	19	8700	12000	7306B	31.3	37	65	1	0.362
	72	19	1.1	0.6	32.3	20.3	34.2	22.1	16000	21000	7306C	16.5	37	65	1	0.362
	90	23	1.5	1	47.6	28.4	5.1	31.6	7300	9700	7406	29.3	38.5	81.5	1.5	0.686
90	23	1.5	1	44.2	26.4	47.4	29.3	6500	8900	7406B	37.3	38.5	81.5	1.5	0.686	

Single Row Angular Contact Ball Bearings



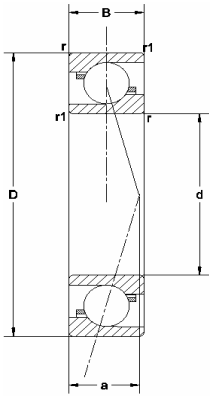
Boundary Dimensions					Basic Load Rating (kN)				Limiting Speed (rpm)		Part Number	Working point position a	Shoulder Dimensions			Mass (kg) Approx
d	D	B	r	r1	with machined		with pressed		Grease	Oil			da	Da	ra	
35	55	10	0.6	0.3	12.5	9.7			19000	25000	7907C	11	40	50	0.6	0.074
	62	14	1	0.6	13.3	10.9			18000	23000	ACH007C	13.5	41	56	1	0.162
	62	14	1	0.6	17.5	12.6			12000	15000	7007	21.2	40.5	56.5	1	0.17
	62	14	1	0.6	15.8	11.4			9200	12000	7007B	27.6	40.5	56.5	1	0.17
	62	14	1	0.6	19.1	13.7			17000	22000	7007C	13.5	40.5	56.5	1	0.17
	72	17	1.1	0.6	28.1	18.6	29.7	20.2	11000	14000	7207	24.2	42	65	1	0.295
	72	17	1.1	0.6	25.6	17	27	18.5	8300	11000	7207B	31.4	42	65	1	0.295
	72	17	1.1	0.6	30.4	20.1	32.1	21.7	15000	20000	7207C	15.8	42	65	1	0.295
	80	21	1.5	1	35.4	22	39.9	26.4	10000	13000	7307	27.4	43.5	71.5	1.5	0.475
	80	21	1.5	1	32.5	20.2	36.6	24.3	77000	10000	7307B	35	43.5	71.5	1.5	0.475
	80	21	1.5	1	37.9	23.6	42.8	28.3	14000	19000	7307C	18.3	43.5	71.5	1.5	0.475
	100	25	1.5	1	60.4	37	64.8	41.1	65000	8600	7407	32.6	43.5	91.5	1.5	0.95
100	25	1.5	1	56.2	34.3	60.2	38.1	57000	7900	7407B	41.7	43.5	91.5	1.5	0.95	
40	62	12	0.6	0.3	15.7	12.4			17000	22000	7908C	12.8	45	57	0.6	0.107
	68	15	1	0.6	13.9	12.2			16000	21000	ACH008C	14.7	46	62	1	0.203
	68	15	1	0.6	18.7	14.6			11000	14000	7008	23.2	45.5	62.5	1	0.21
	68	15	1	0.6	16.8	13.2			8300	11000	7008B	30.2	45.5	62.5	1	0.21
	68	15	1	0.6	20.5	15.9			15000	20000	7008C	14.8	45.5	62.5	1	0.21
	80	18	1.1	0.6	33.6	23.3	35.3	25.1	10000	12000	7208	26.3	47	73	1	0.382
	80	18	1.1	0.6	30.6	21.3	23.1	23	7500	10000	7208B	34.2	47	73	1	0.382
	80	18	1.1	0.6	36.4	25.2	38.2	27.1	14000	18000	7208C	17	47	73	1	0.382
	90	23	1.5	1	43.2	27.4	44.8	32.9	9200	12000	7308	30.3	48.5	81.5	1.5	0.657
	90	23	1.5	1	39.7	25.2	48.8	30.3	6900	9200	7308B	38.8	48.5	81.5	1.5	0.657
	90	23	1.5	1	46.3	29.4	52.3	35.3	13000	17000	7308C	20.2	48.5	81.5	1.5	0.657
	110	27	2	1	69.9	43.5	75	48.4	5900	7900	7408	35.5	50	100	2	1.23
110	27	2	1	64.9	40.4	69.6	44.9	5200	7200	7408B	45.4	50	100	2	1.23	
45	68	12	0.6	0.3	16.6	14.1			15000	20000	7909C	13.6	50	63	0.6	0.127
	75	16	1	0.6	15.5	14			14000	19000	ACH009C	16	51	69	1	0.258
	75	16	1	0.6	22.2	17.7			10000	12000	7009	25.3	50.5	69.5	1	0.26
	75	16	1	0.6	20	16			7500	10000	7009B	33.2	50.5	69.5	1	0.26
	75	16	1	0.6	24.4	19.3			14000	18000	7009C	16	50.5	69.5	1	0.26
	85	19	1.1	0.6	37.7	26.6	39.6	28.6	9400	12000	7209	28	52	78	1	0.43
	85	19	1.1	0.6	34.3	24.3	36.1	26.1	7000	9400	7209B	36.4	52	78	1	0.43
	85	19	1.1	0.6	40.8	28.7	42.9	30.9	13000	17000	7209C	18.1	52	78	1	0.43
	100	25	1.5	1	55.1	37.1	58.4	40.4	8200	10000	7309	33.6	53.5	91.5	1.5	0.875
	100	25	1.5	1	50.6	34.1	53.6	37.2	6200	8200	7309B	43.1	53.5	91.5	1.5	0.875
	100	25	1.5	1	59.2	39.7	62.7	43.4	11000	15000	7309C	22.3	53.5	91.5	1.5	0.875
	120	29	2	1	84.9	53.8	91.1	59.8	5400	7100	7409	38.6	55	110	2	1.55
120	29	2	1	78.9	50	84.7	55.5	4800	6600	7409B	49.5	55	110	2	1.55	

Single Row Angular Contact Ball Bearings



Boundary Dimensions					Basic Load Rating (kN)				Limiting Speed (rpm)		Part Number	Working point position a	Shoulder Dimensions			Mass (kg) Approx
d	D	B	r	r1	with machined		with pressed		Grease	Oil			da	Da	ra	
50	72	12	0.6	0.3	17.4	15.7			14000	18000	7910C	14.2	55	67	0.6	0.128
	72	12	0.6	0.3	13.2	12.8			14000	18000	ACH910C	14.2	55	67	0.6	0.139
	80	16	1	0.6	16.1	15.5			13000	17000	ACH010C	16.7	56	74	1	0.279
	80	16	1	0.6	23.6	20.1			9200	11000	7010	26.9	55.5	74.5	1	0.29
	80	16	1	0.6	21.2	18.1			6900	9200	7010B	35.3	55.5	74.5	1	0.29
	80	16	1	0.6	26	21.9			13000	17000	7010C	16.8	55.5	74.5	1	0.29
	90	20	1.1	0.6	39.4	29.4	41.3	31.5	8500	11000	7210	30.4	57	83	1	0.485
	90	20	1.1	0.6	35.7	26.7	37.4	28.6	6400	8500	7210B	39.6	57	83	1	0.485
	90	20	1.1	0.6	42.8	31.8	44.8	34.1	12000	16000	7210C	19.4	57	83	1	0.485
	110	27	2	1	70.1	48.1	74.3	52.5	7300	9100	7310	37.2	60	100	2	1.14
	110	27	2	1	64.4	44.3	68.2	48.3	5500	7300	7310B	47.9	60	100	2	1.14
	110	27	2	1	75.1	51.6	79.6	56.2	10000	13000	7310C	24.5	60	100	2	1.14
	130	31	2.1	1.1	97.4	65.3			4900	6600	7410	41.6	62	118	2	1.92
	130	31	2.1	1.1	90.2	60.4			4400	6000	7410B	53.5	62	118	2	1.92
55	80	13	1	0.6	19.7	18.5			13000	17000	7911C	15.5	61	74	1	0.178
	80	13	1	0.6	14.2	14.6			13000	17000	ACH911C	15.5	61	74	1	0.195
	90	18	1.1	0.6	20	19.5			12000	16000	ACH011C	18.7	62	83	1	0.413
	90	18	1.1	0.6	31.1	26.3			8300	10000	7011	29.9	62	83	1	0.42
	90	18	1.1	0.6	27.9	23.7			6200	8300	7011B	39.4	62	83	1	0.42
	90	18	1.1	0.6	34.1	28.6			11000	15000	7011C	18.7	62	83	1	0.42
	100	21	1.5	1	48.7	37.1	51	39.8	7600	9500	7211	33.3	63.5	91.5	1.5	0.635
	100	21	1.5	1	44.1	33.8	46.2	36.2	5700	7600	7211B	43.6	63.5	91.5	1.5	0.635
	100	21	1.5	1	52.9	40.2	55.4	43.1	11000	14000	7211C	21.1	63.5	91.5	1.5	0.635
	120	29	2	1	80.9	56.5	85.8	61.7	6700	8400	7311	40.2	65	110	2	1.45
	120	29	2	1	74.3	52	78.7	56.7	5000	6700	7311B	51.8	65	110	2	1.45
	120	29	2	1	86.8	60.6	91.9	66.1	9300	12000	7311C	26.4	65	110	2	1.45
	140	33	2.1	1.1	118	52.4			4500	6000	7411	45	67	128	2	2.36
	140	33	2.1	1.1	110	76.5			4000	5500	7411B	57.8	67	128	2	2.36
60	85	13	1	0.6	23.2	21.8			12000	16000	7912C	16.3	66	79	1	0.187
	85	13	1	0.6	13.9	14.5			12000	16000	ACH912C	16.2	66	79	1	0.209
	95	18	1.1	0.6	20.8	21.2			11700	15000	ACH012C	19.4	67	88	1	0.442
	95	18	1.1	0.6	31.9	28.1			7700	9700	7012	31.4	67	88	1	0.45
	95	18	1.1	0.6	28.6	25.3			5800	7700	7012B	41.5	67	88	1	0.45
	95	18	1.1	0.6	35	30.6			11000	14000	7012C	19.4	67	88	1	0.45
	110	22	1.5	1	58.9	45.7	61.7	49	6900	8600	7212	36.1	68.5	101.5	1.5	0.82
	110	22	1.5	1	53.4	41.6	55.9	44.6	5100	6900	7212B	47.5	68.5	101.5	1.5	0.82
	110	22	1.5	1	64	49.5	67	53	9500	13000	7212C	22.7	68.5	101.5	1.5	0.82
	130	31	2.1	1.1	92.5	65.6	98.1	71.6	6200	7700	7312	43.2	72	118	2	1.81
	130	31	2.1	1.1	84.9	60.3	90	65.8	4600	6200	7312B	55.8	72	118	2	1.81
	130	31	2.1	1.1	99.2	70.3	105	76.7	8600	11000	7312C	28.4	72	118	2	1.81
	150	35	2.1	1.1	129	93.6			4100	5500	7412	48.5	72	138	2	2.85
	150	35	2.1	1.1	119	86.7			3700	5100	7412B	62.6	72	138	2	2.85

Single Row Angular Contact Ball Bearings



Boundary Dimensions					Basic Load Rating (kN)				Limiting Speed (rpm)		Part Number	Working point position a	Shoulder Dimensions			Mass (kg) Approx
d	D	B	r	r1	with machined		with pressed		Grease	Oil			da	Da	ra	
65	90	13	1	0.6	20.8	21.2			11000	15000	7913C	16.9	71	84	1	0.205
	90	13	1	0.6	14.3	15.4			11000	15000	ACH913C	16.9	71	84	1	0.223
	100	18	1.1	0.6	21.5	22.6			10100	14000	ACH013C	20	72	93	1	0.471
	100	18	1.1	0.6	33.7	31.4			7200	9000	7013	33	72	93	1	0.47
	100	18	1.1	0.6	30.1	28.3			5400	7200	7013B	43.8	72	93	1	0.47
	100	18	1.1	0.6	37.1	34.3			10000	13000	7013C	20.1	72	93	1	0.47
	120	23	1.5	1	67.3	54.2	70.2	57.8	6400	8000	7213	38.2	73.5	111.5	1.5	1.02
	120	23	1.5	1	60.9	49.2	63.6	52.6	4800	6400	7213B	50.3	73.5	111.5	1.5	1.02
	120	23	1.5	1	73.1	58.7	76.3	62.6	8900	12000	7213C	23.9	73.5	111.5	1.5	1.02
	140	33	2.1	1.1	105	75.3	111	82.2	5800	7200	7313	46.3	77	128	2	2.22
	140	33	2.1	1.1	96.1	69.3	102	75.6	4300	5800	7313B	59.7	77	128	2	2.22
	140	33	2.1	1.1	112	80.7	119	88.1	8000	11000	7313C	30.3	77	128	2	2.22
160	37	2.1	1.1	139	104			3900	5200	7413	51.4	77	148	2	3.41	
160	37	2.1	1.1	129	96.8			3500	4800	7413B	66.3	77	148	2	3.41	
70	100	16	1	0.6	29	28.9			10000	12000	7914C	19.4	76	94	1	0.332
	100	16	1	0.6	18	19.5			10000	12000	ACH914C	19.4	76	94	1	0.369
	110	20	1.1	0.6	29.4	30.5			9300	13000	ACH014C	22.1	77	103	1	0.642
	110	20	1.1	0.6	42.7	39.4			6600	8300	7014	36	77	103	1	0.66
	110	20	1.1	0.6	38.3	35.5			5000	6600	7014B	47.8	77	103	1	0.66
	110	20	1.1	0.6	46.9	43			9200	12000	7014C	22.1	77	103	1	0.66
	125	24	1.5	1	69.8	55.6	76.3	63.5	6100	7600	7214	40.2	78.5	116.5	1.5	1.12
	125	24	1.5	1	63.2	50.6	69.1	57.8	4600	6100	7214B	52.9	78.5	116.5	1.5	1.12
	125	24	1.5	1	75.9	60.2	83	68.8	8400	11000	7214C	25.13	78.5	116.5	1.5	1.12
	150	35	2.1	1.1	118	85.8	125	93.6	5400	6700	7314	49.3	82	138	2	2.7
	150	35	2.1	1.1	108	78.9	114	86	4000	5400	7314B	63.7	82	138	2	2.7
	150	35	2.1	1.1	126	91.9	134	100	7500	9900	7314C	32.2	82	138	2	2.7
180	42	3	1.1	149	115			3500	4600	7414	57.6	84	166	2.5	4.99	
180	42	3	1.1	148	119			3100	4300	7414B	74.2	84	166	2.5	4.99	
75	105	16	1	0.6	29.4	30.5			9300	12000	7915	20.1	81	99	1	0.35
	105	16	1	0.6	18.5	20.7			9300	12000	ACH915C	20.1	81	99	1	0.391
	115	20	1.1	0.6	29.8	31.6			8800	12000	ACH015C	22.7	82	108	1	0.677
	115	20	1.1	0.6	43.6	41.7			6300	7800	7015	37.4	82	108	1	0.69
	115	20	1.1	0.6	39.1	37.6			4700	6300	7015B	49.9	82	108	1	0.69
	115	20	1.1	0.6	48	45.6			8700	11000	7015C	22.7	82	108	1	0.69
	130	25	1.5	1	79.2	65.2	82.7	69.45	5800	7200	7215	42.1	83.5	121.5	1.5	1.23
	130	25	1.5	1	71.7	59.3	74.9	63.3	4300	5800	7215B	55.5	83.5	121.5	1.5	1.23
	130	25	1.5	1	86.1	70.6	89.9	75.3	8000	11000	7215C	26.2	83.5	121.5	1.5	1.23
	160	37	2.1	1.1	128	97	136	106	5000	6300	7315	52.4	87	148	2	3.15
	160	37	2.1	1.1	118	89.2	125	97.3	3800	5000	7315B	67.8	87	148	2	3.15
	160	37	2.1	1.1	137	104	146	113	7000	9200	7315C	34.2	87	148	2	3.15
190	45	3	1.1	171	141			3300	4400	7415	61.3	89	176	2.5	5.9	
190	45	3	1.1	158	131			2900	4000	7415B	78.9	89	176	2.5	5.9	